

TR Series Regulator



● TR1000-M5

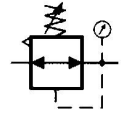


● TR2000-02

● Air Regulator

It adopts balanced inlet with relief device. It has the advantages of stable pressure, high precision, quick reaction and firm lockup. It can be freely combined with other air-source treatment products.

■ Graphics Sign



● Ordering Code

TR
Series

2000
Type
1000
2000
3000
4000
5000

02
Pipe size
M5
01 : G1/8
02 : G1/4
03 : G3/8
04 : G1/2
06 : G3/4
10 : G1



● TR3000-03



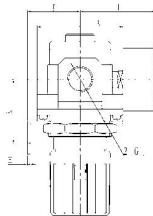
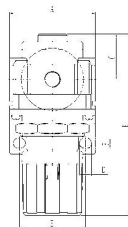
● TR4000-04

■ Technical Parameter

Specification	TR1000-M5	TR2000-02/01	TR3000-03/02	TR4000-04/03	TR4000-06	TR5000-10/06
Applicable Medium	Air					
Rating Flow(L/min)	100	550	2500	6000	6000	8000
Applicable Pressure Range	0.05 ~ 0.7MPa	0.05 ~ 1MPa				
Medium Temperature	0 ~ 60°C					
Type of Valve	Relief Type					
Gauge Port Size	G1/16	G1/8		G1/4		

■ Figure Dimension

● TR1000-M5 TR2000-02/01 TR3000-03/02 TR4000-04/03 TR4000-06 TR5000-10/06



Machinability Hole In Panel



TR2000-3000:Max Thickness 3.5
TR1000 5000:Max Thickness 5

Type	A	B	C	D	E	F	G	H	I	J	K	P
TR1000-M5	25	61	11	6.5	28	4.5	M5	2	26	25	30	20.5
TR2000-02/01	40	91	17	15	34	5.5	G1/4	2.3	50	30	45	33.5
TR3000-03/02	53	122	35	8	40	6.5	G3/8	2.3	56	48	46	42.5
TR4000-04/03	70	148	37	10.5	54	8.5	G1/2	2.3	61	43	52	51
TR4000-06	76	182	37	10.5	54	8.5	G3/4	2.3	70	43	52	51
TR5000-10/06	90	165	45	11	54	11	G1	3.2	71.5	43	50	51