

## UWS Series Solenoid Valve



● UWS-50

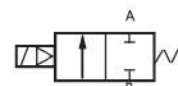


● UWS-25

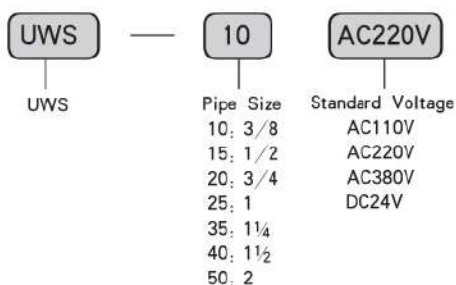


● UWS-15

### Graphics Sign



### Ordering Code



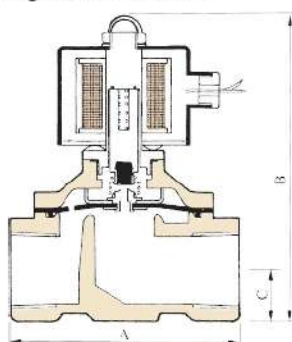
### Specific Property:

This guiding type valve adopts the diaphragm seal structure, with zero differential pressure starting function. The body adopts stainless steel, with anticorrosion, large flow, simple structure, easy maintenance, good waterproof performance and multiple wiring directions.

### Technical Parameter

Item \ Specification	UWS-10	UWS-15	UWS-20	UWS-25	UWS-35	UWS-40	UWS-50		
Material of Body	Stainless Steel								
Operating Method	Film Pilot								
Pipe Size	3/8	1/2	3/4	1	1 1/4	1 1/2	2		
Nominal Diameter (mm)	16	20	20	25	37	37	50		
Applicable Fluid	(Air), (Water), (Oil) (50CST below), (Steam), (Chemicals)								
Pressure Range	0 ~ 0.8MPa								
Applicable Temperature	-5 ~ 99°C								
Specified Voltage	AC12V	AC24V	AC36V	AC110V	AC220V	AC380V	DC12V	DC24V	DC110V
UW10-25 (Power)	11W	11W	10W	12 W	12W	12W	20 W	20 W	20 W
UW35-50 (Power)	22W	22W	22W	20 W	20W	20W	48 W	44 W	45 W
Operating Voltage Range	± 10%								
Min. Activating Time	0.05S								
Install Method	Horizontal Fixing								

### Figure Dimension



Specification	A	B	C	D	E	F
UWS-10	69	117	16	φ 50	57	3/8
UWS-15	69	117	16	φ 50	57	1/2
UWS-20	74	124	17	φ 50	57	3/4
UWS-25	99	135	23	φ 50	73	1
UWS-35	123	172	30	φ 70	95	1 1/4
UWS-40	123	172	30	φ 70	95	1 1/2
UWS-50	168	209	37	φ 70	123	2