

## US Series High-temperature Solenoid Valve



● US-50

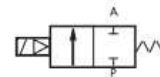


● US-25

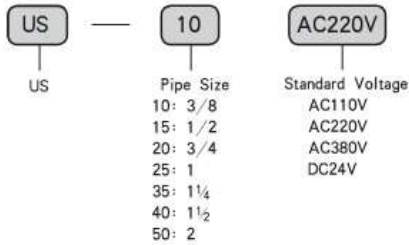


● US-15

### ■ Graphics Sign



### ● Ordering Code



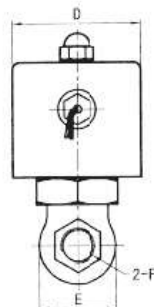
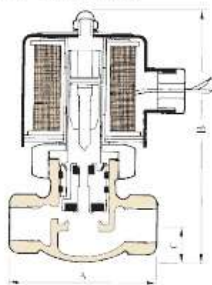
### Specific Property:

It adopts teflon hard seal structure, with reliable performance, anticorrosion, high-temperature resistance, large flow, high pressure, good waterproof performance and multiple wiring directions.

### ■ Technical Parameter

Item \ Specification	US-10	US-15	US-20	US-25	US-35	US-40	US-50		
Material of Body	Foundry								
Operating Method	Plunger Pilot								
Pipe Size	3/8	1/2	3/4	1	1 1/4	1 1/2	2		
Nominal Diameter (mm)	17	17	17	20	30	30	50		
Applicable Fluid	(Air) , (Water) , (Oil) (50CST bellow) , (Steam)								
Pressure Range	0.05 ~ 1.5MPa								
Applicable Temperature	-5 ~ 185°C								
Specified Voltage	AC12V	AC24V	AC36V	AC110V	AC220V	AC380V	DC12V	DC24V	DC110V
Power	22W	22W	22W	20 W	20W	20W	48 W	44 W	45W
Operating Voltage Range	± 10%								
Min. Activating Time	0.05S								
Install Method	Horizontal Fixing								

### ■ Figure Dimension



Specification	A	B	C	D	E	F
US-10	83	146	21	φ 70	42	3/8
US-15	83	146	21	φ 70	42	1/2
US-20	83	146	21	φ 70	42	3/4
US-25	90	162	26	φ 70	52	1
US-35	110	183	36	φ 70	74	1 1/4
US-40	110	183	36	φ 70	74	1 1/2
US-50	163	223	47	φ 70	95	2