

## 3-WAY BALL VALVE IS05211

(DESIGN STANDARD) : ASME B16.34 GB/T12237

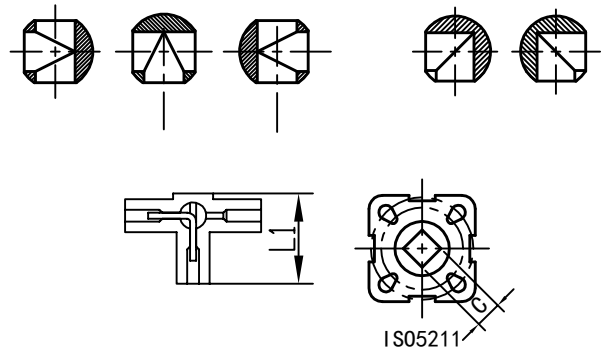
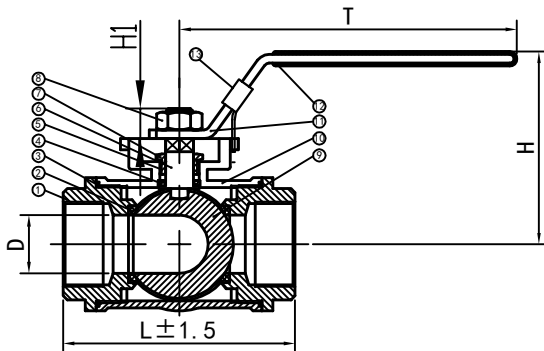
(TEST & INSPECTION) : API 598 JB/T9092

(THREADED ENDS) : PT, BSPT, BSP, NPT, DIN 2999, DIN 259, DIN EN ISO 228 (PRODUCT STYLE) : Q14/15F-63/1000WOG (C/P/R) (MOUNTING PAD) : ISO 5211

(WORKING PRESSURE) : 6.3M.pa、1000PSI

(TEMPERATURE RANGE) : -20°C ~ 180°C

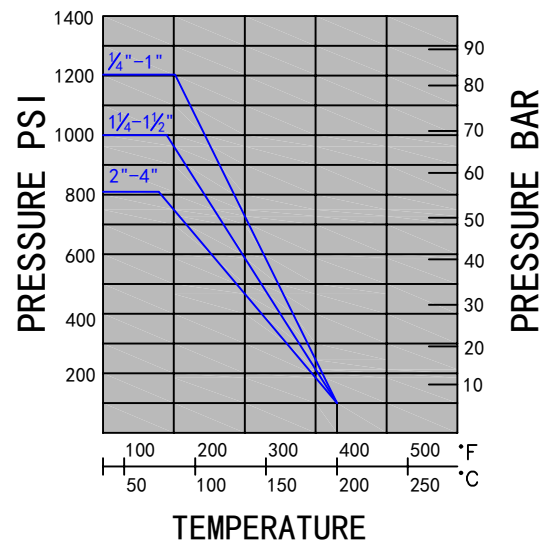
(MATERIAL) : ASTM-A351-CF8M、ASTM-A351-CF8、ASTM-A216-WCB



### (MAIN PARTS MATERIALS) :

NO.	PART NAME	MATERIAL	QTY
1	CAP	CF8/CF8M/WCB	3
2	SEAT	PTFE/RPTFE	4
3	JOINT GASKET	PTFE/RPTFE	3
4	THRUST WASHER	PTFE/RPTFE	1
5	PACKING	PTFE/RPTFE	1
6	STEM	S304/S316	1
7	GLAND	S201/S304	1
8	NUT	S201/S304	2
9	BALL	S304/S316	1
10	BODY	CF8/CF8M/WCB	1
11	HANDLE	S201/S304	1
12	HANDLE COVER	PVC	1
13	LOCK	S201/S304	1

### PRESSURE-TEMPERATURE RATING



### (MAIN SIZE) :

SIZE	1/4"	3/8"	1/2"	3/4"	1"	1 1/4"	1 1/2"	2"	2 1/2"	3"	4"
DN	8	10	15	20	25	32	40	50	65	80	100
D	8	10	12	15	18	25	32	38	50	64	78
L ± 1.5	73	73	75	85	100	120	125	150	175	201	235
L1	55	55	55	63	72	92	100	119	142	163	192
H	65	65	65	70	83	90	115	121	138	150	154
T	131	131	131	131	167	167	193	193	242	272	295
C	9	9	9	9	11	11	14	14	17	17	17
IS05211	F03/F04	F03/F04	F03/F04	F03/F04	F04/F05	F04/F05	F05/F07	F05/F07	F07/F10	F07/F10	F07/F10
WEIGHT (Kg)	0.645	0.58	0.57	0.74	1.225	2.215	3.355	4.505	6.87	9.67	13.73
WEIGHT (Kg)	0.65	0.63	0.575	0.79	1.24	2.255	3.435	4.585	6.96	9.97	14.245